

# Lumidigm® M-Series Secure Line

Protecting your networks in an unsafe world

HID patented multispectral imaging (MSI) works on the most difficult finger types



HID MSI ensures users have a fast, single touch experience and authorized users are not falsely rejected

Endpoints are the weakest link in your network security. Connecting devices outside your well protected internal network establishes a path for hackers to bypass standard security controls and access your network. Even the best firewalls are ineffective. Vulnerable endpoints enable cyber criminals to access your network stealing data or holding data hostage.

It is estimated that 70% of security breaches originate at an endpoint and over 1 million malware variants are created each day, most of which are directed at endpoints. HID's endpoint encryption is the critical layer for endpoint security. Encryption protects the data on the fingerprint readers and during transmission, preventing cyber criminals from accessing your network. By effectively blocking threats and access attempts HID reduces your risk of:

- Downed networks and lost business
- Financial loss from theft, ransom or reparations to third parties
- Brand damage and lost customers



M420-NC-01

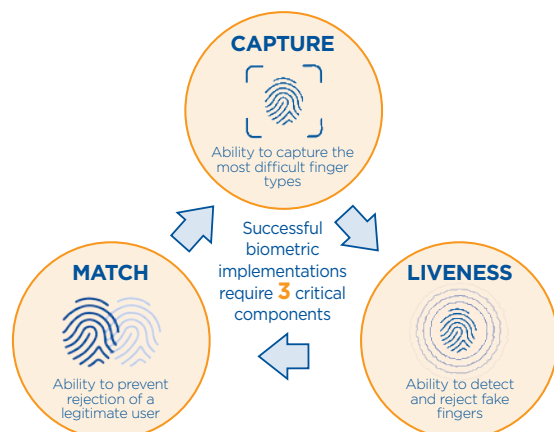
M421-NC-01

## KEY BENEFITS:

- **Reduce Financial Losses** – HID MSI technology, the market leading liveness detection accurately and consistently identifies and rejects fake finger attempts
- **Protect Data Assets** – Encryption prevents cyber criminals from gaining unauthorized access to your networks and intellectual property
- **Protect Keys** – Physical tamper protection and active erase prevents cyber criminals from accessing keys and data stored on fingerprint readers

## APPLICATIONS:

- Workforce Management
- Physical Access Control
- Single Sign-On
- Point of Sale Systems
- Payment Schemes
- Visitor Identification
- Know Your Customer
- Loyalty/Membership Programs
- Compliance



HID patented multispectral imaging (MSI) technology delivers market leading Capture, Liveness and Match functionality. Ensuring a successful biometric implementation and superior user experience.

	Secure Line M420-NC-01 (on device PAD, encryption, template creation & 1:1 matching)		Secure Line M421-NC-01 (on device PAD, encryption, template creation & 1:1 matching)	
				
	FINGERPRINT IMAGING SYSTEM			
Technology	HID Patented Lumidigm® Multispectral Imaging (MSI)			
Output image resolution / bit depth	500 dpi / 8-bit, 256 grayscale			
Platen area	0.55" x .69" (13.9mm x 17.4mm) rectangle, durable, chemical resistant hard optical glass (no coatings to wear out)			
	BIOMETRIC FUNCTIONS			
Image output format	Uncompressed or WSQ compressed images (FBI Certified)			
Template output format	ANSI 378 and ISO 19794-2 compliant (MINEX III certified)			
Match on device	ANSI 378 and ISO 19794-2 template inputs supported			
Presentation Attack Detection (PAD)	ISO/IEC 30107-3, Level 1 Presentation Attack Detection (PAD) certified Multispectral Imaging (MSI), Live Finger Detection (LFD)			
Latent protection	User Configurable			
	FINGERPRINT TEMPLATES			
Verify (1:1) Template Storage	Based on host storage capacity			
Identify (1:N) User Storage	N/A			
Total (1:N) User-Finger Templates	On Host - 5,000 users, 10 fingers per user, 3 images per finger			
	SECURITY FEATURES			
Physical security	Hard epoxy encapsulated electronics with active tamper mesh, detection switches, temperature sensors, tamper evident label			
Tamper detection and response	Secure battery backed memory with active memory zeroization upon Intrusion Detection			
Cryptographic algorithms supported	AES 128/256, TDES 2/3 Key, SHA-256, RSA-2048. See Secure Integration Kit data sheet for details			
	BIOMETRIC PERFORMANCE			
Finger detection to image out	1.3 sec. (typical)			
Finger detection to template out	1.6 sec. (typical)			
Presentation Attack Detection (PAD) enabled	Add 0.6 sec. (typical)			
	ENVIRONMENTAL RANGE			
Temperature (operating, with enclosure)	-10 to 60°C			
Ambient Light Immunity	90 Klux (PAD Off) / 10 Klux (PAD On)			
Humidity (operating, with enclosure)	0 – 95% RH			
ESD Immunity	IEC 61000-4-2 level 3 (+/-8kV air discharge, 6kV contact discharge)			
	INTERFACE			
USB	USB 2.0 high speed (480 Mbps), Mini B connector		USB 2.0 high speed (480 Mbps), 1m USB cable	
Operating systems supported	Windows® 10 (64-bit), Linux X86/X64			
	FORM FACTOR & DURABILITY			
Overall dimensions	1.44"W x 2.53"D x 1.74"H (36.8mm x 64.4mm x 44.3mm)		1.85"W x 3.02"D x 2.06"H (47.1mm x 76.8mm x 52.5mm)	
Enclosure	ABS Plastic			
	POWER SUPPLY REQUIREMENTS			
Supply current — operational	+5 VDC, 400 mA (peak)			
Supply current — idle	+5 VDC, 200 mA (typical)			
	STANDARDS COMPLIANCE			
Interoperability	ANSI-378, ISO 19794-2, ISO/IEC 19784-1, NIST MINEX III Certified			
Device Certifications	CE, FCC, UL/CB, IEC 62471, IEC-60950			
Environmental	(REACH, RoHS, WEEE)			
Ingress	Ingress at platen IP65		IP52	
Other	NIST CAVP			
Driver Support	Microsoft W HQL Certified for Windows			

North America: +1 512 776 9000 | Toll Free: 1 800 237 7769  
Europe, Middle East, Africa: +44 1440 714 850  
Asia Pacific: +852 3160 9800 | Latin America: +52 (55) 9171-1108  
For more global phone numbers click [here](#)

© 2022 HID Global Corporation/ASSA ABLOY AB. All rights reserved.  
2022-11-09-eat-lumidigm-mseries-secure-line-ds-en PLT-05090  
Part of ASSA ABLOY

