



ePassport Solutions

HID Citizen Identity Solutions





Passport Solutions

The landscape of global travel has changed dramatically in recent years. Thanks to an expanding population and higher incomes, more people are traveling than ever before. Conversely, factors such as rising geopolitical instability, terrorist activity and cyber-crimes are increasing the threats to personal identity, impacting citizens' willingness to trust one another and affecting critical identity documents, like passports.

At the same time, global social platforms which make it possible to buy or exchange information and goods from anywhere in real time have changed expectations for user experience. Citizens and businesses want greater access, speed, convenience, flexibility and transparency than ever before, and this includes their journey through the passport application process and customs at the point of travel.

In this rapidly changing landscape, governments are under increasing pressure to deliver more secure borders and protect citizens' identities against global counterfeit threats.



The Right Foundation

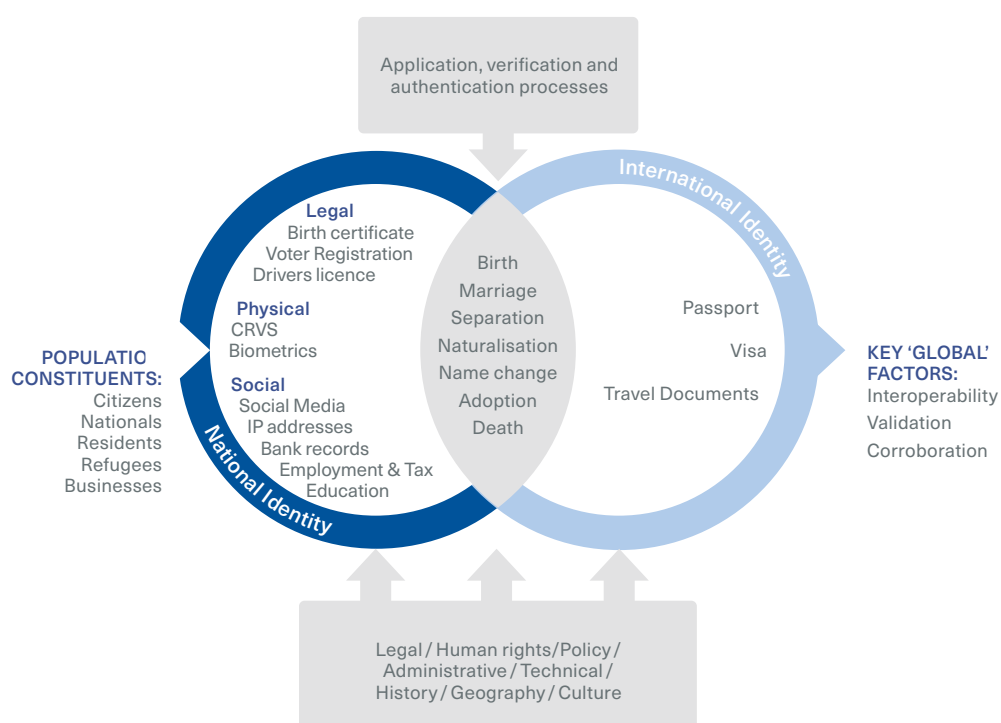
The journey to a globally interoperable, secure passport solution starts with each country understanding its identity ecosystem.

Validated, authorized and corroborated identity documentation is a critical prerequisite from both a national and global standpoint.

The International Civil Aviation Organization (ICAO) — a specialist agency of the UN responsible for international aviation standards — details what it refers to as “evidence of identity,” which includes an individual’s legal, physical and social footprint. A country’s ability to prevent terrorists from traveling illegally under a false name is not simply the responsibility of the passport office, but implicates the application, verification and authentication processes for its breeder documents as well.

These documents ultimately form the first link in a chain of trust which concludes in the Country Signing Certificate Authority’s (CSCA) authentication of an ePassport.

Where requested, HID specialists can provide an assessment of a country’s existing ecosystem and make recommendations that will help deliver improved security.



The chain of trust which enables international travel

Key Considerations

An integral part of the identity ecosystem, passport solutions can be delivered as either machine readable (MRP) or with an electronic chip (ePassport).

MACHINE-READABLE PASSPORT (MRP)

Holder's details are displayed both on the bio-data page and encoded in an optical character recognition format known as a machine-readable zone (MRZ).

ICAO guidelines state that all countries should be MRP-compliant as a minimum standard, ensuring global document interoperability.

However, an ePassport enables additional levels of data security and verification by:

- Giving increased certainty about the bearer's identity, helping to combat ID theft and the creation of fraudulent

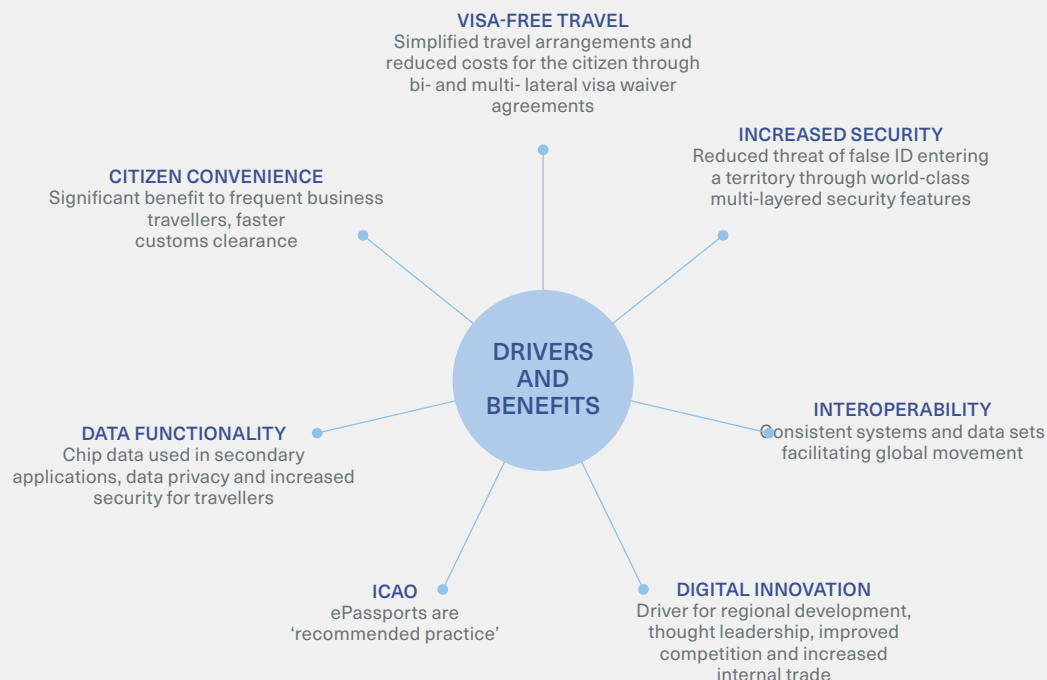
ePASSPORT

Encrypted biographical and biometric data is also stored securely on a chip, embedded somewhere in the document itself.

documents

- Facilitating a more efficient border-crossing process
- Using cryptographic data protection to safeguard data integrity and confidentiality

Now stated as "recommended practice" by ICAO, over 130 countries have already transitioned to an ePassport solution.



The benefits of ePassport implementation

HID's Approach to Creating a Secure Passport Solution

Resilience against counterfeit threat is the primary consideration for creating any passport — for both the physical document and the complete data and digital solution — but more human drivers are increasingly important in particular to meet the needs of individuals and businesses by facilitating greater access, speed, convenience, flexibility and transparency.

HID specialists work with countries on a 1–1 basis to understand specific requirements in detail, including conducting a country threat analysis. Custom solutions are the result of a number of discovery meetings shaped by expertise gained from the successful completion of implementations worldwide.

Each country has unique passport solution requirements based on many factors, including but not limited to threat level, existing data availability, infrastructure and volume needs.

SOLUTION OVERVIEW

Digital Solution

HID's comprehensive digital identity management solution simplifies what was previously a series of highly complex workstreams. This highly configurable data management tool facilitates the recording, validation, retrieval, updating, certifying and issuance of documents to citizens.

Document Solution

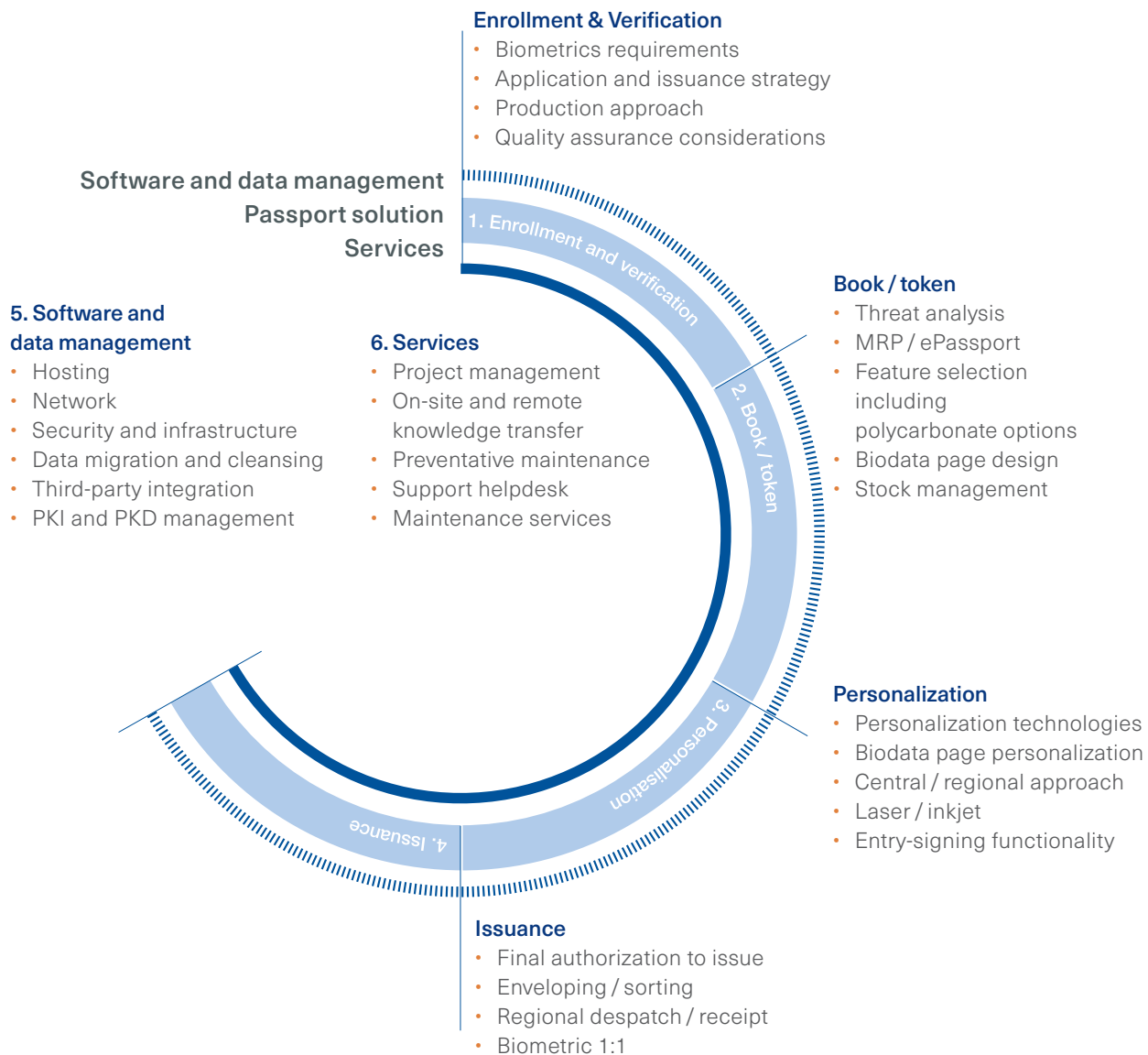
Secure, standards-driven identity documents (from passports to driving licenses and ID cards to residence permits) are tailored to each nation's requirements. They are designed to counter specifically identified threats, using a sophisticated, seamless layering of protective features.

Service Solution

Fully-customizable support packages provide each country with ongoing support and advice. This ensures that a country's specific needs and circumstances are addressed during the implementation phase and throughout the full operational life of an identity management solution.



The creation of a custom passport solution typically involves six key areas of consideration. HID's dedicated experts take countries through this entire process step-by-step, working closely with officials to create a solution suited to specific needs.



The passport book itself represents a nation and how it's perceived on an international level. HID's award-winning, in-house design team is among the best in the world, with a long history of innovation and excellence recognized across the industry.

Designers can go into any territory and deliver a custom service where required. This collaborative approach will ensure not only an aesthetically excellent design, but also that the most appropriate features are incorporated to counter the specific threats posed to the document and identity of its holder.

1. SUBSTRATES

HID documents can be constructed using a variety of substrates including cylinder mould made paper, polycarbonate pages and polymer options.

2. IN-HOUSE DESIGN

Beautiful imagery, strong design themes and cultural aesthetics are combined with a highly sophisticated layering of security features to combat specifically identified threats and to ensure the document's integrity.

3. BOOK CONSTRUCTION

Customers have the option of standard book assembly or polycarbonate bio-data pages.

4. HIDDEN SECURITY

Further security can be added by using hidden features and state-of-the-art techniques such as deliberate errors, specialist stitching and shaped laser perforations.

5. PRINT

The most appropriate features and techniques are selected to meet the specific needs of the customer. These include:

litho, intaglio, iridescent, UV, HID Mirage™, latent images microtext, see-through features, rainbows, guilloches, medallion fine-line workings, duplex and triplex patterns, user-definable screen and metameric inks.

6. PERSONALIZATION

Advanced personalization features use the holder's personal details and apply encryption techniques, specialist codes and variable print features to ensure each document is totally unique.

7. BIO-DATA PAGE PROTECTION

The bio-data page is the most important in a passport, so it is protected by additional security features. The use of a polycarbonate bio-data page solution or paper page with a thin film laminate patch such as HID's MLIS™ further safeguards the holder's personal details.

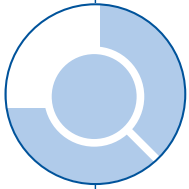




When designing a strong, resilient and trusted identity document, it is critical to understand the threats that must be countered. The security features selected need to protect against the threats of counterfeit and fraud.

HID applies deep knowledge and expertise in identity document design, laying out innovative security features and techniques to combat the increasingly sophisticated threats faced today.

HID's approach is structured and thorough yet allows for creativity and inspiration throughout.



This design approach includes:

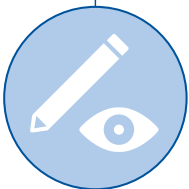
- Creative collaboration
- Designs for use
- Inspirational iconic design
- Insight and evidence
- Layered security
- Reduced risk

Design solutions always commence with a thorough analysis and understanding of the potential threats:

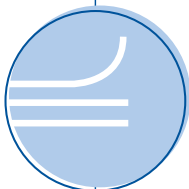
- Counterfeit pages
- Data alteration
- Dismantle and reassembly
- Access to the chip
- Use of blank stolen passport

Next, all options, requirements and design rules are examined, particularly those relating to:

- Substrate security
- Security print
- Construction
- Personalization
- Tamper evidence
- Lifetime durability



HID then layers and integrates a complex and sophisticated solution of security features (overt, covert and forensic features), technical specifications, design themes and aesthetics. Detailed illustrations and original artworks are created, and the most effective quality, proofing and manufacturing techniques applied.



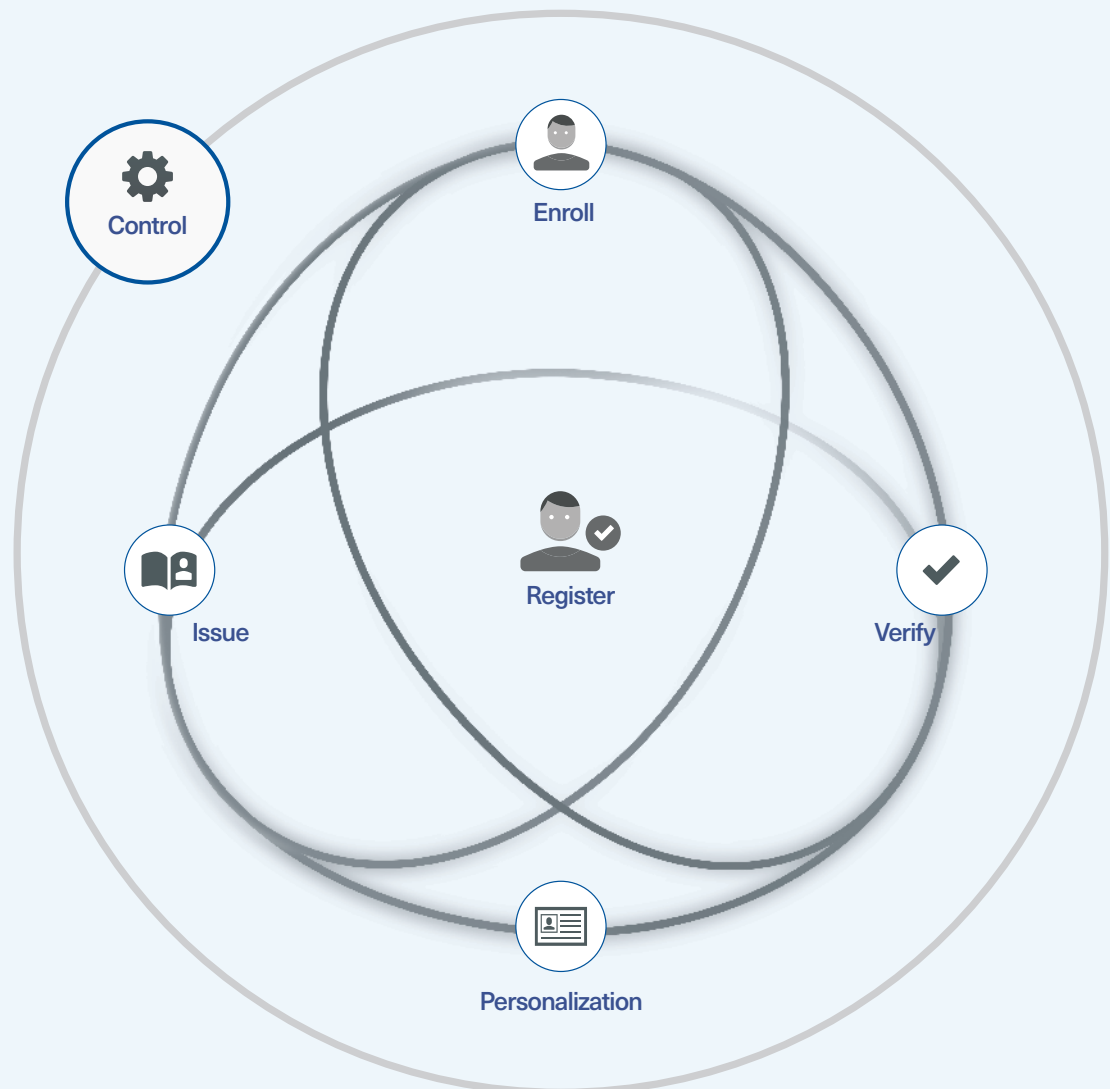
Digital Management

The effective and secure management of citizens' identities for passport solutions requires a series of highly complex workstreams to ensure trusted validation of breeder documents and security of personal data. HID has simplified these into a single, complete, next-generation identity management solution, providing the functionality needed to underpin passport, eGovernment and eCitizen applications.

The HID SOMA™ family of chip operating systems covers the needs for secure ICAO® ePassports, national eIDs, resident permits, digital signature and multi-application cards. These Common Criteria compliant systems are available in native implementations and open platform applets.

HID Integrale™, a web-based software solution for the secure management, personalization and storage of citizen identity data, enables secure passport solutions by allowing governments to record, validate, retrieve, update, certify and issue documents to citizens.

HID INTEGRALE™



Enrollment and Verification

HID enrollment solutions work online or offline, in mobile, regional or centralized configurations or any combination of the above.

The requirements for verification are inevitably unique for each issuing authority. HID solutions are designed to be flexible, accommodating

the range of workflows and interactions that may be needed, including biometric checks and third-party interfacing.

Having delivered solutions across the world, HID understands what works in tried and tested environments and can provide custom options where needed.

- ICAO-compliant biometric data capture of personal details, facial image, fingerprint, signature (attributes unique to an individual) and biographic data capture, including name, date of birth, place of birth, sex, parents' names
- Validation of applicant's eligibility and customer- defined business rules to determine entitlement

HID INTEGRALE™ MODULES:



Enroll

Application module which captures, records and stores citizens' biographic and biometric enrollment details and image data.



Verify

Verification system for authentication of identity and validation of entitlement (1-to-1 matching authentication, and 1-to-many matching identification).





Personalization

As a system integrator and solution provider, HID is able to offer personalization technologies from a wide range of manufacturers, thereby providing the best solution for all customers and their unique requirements.

Solutions can be automated or manual, incorporating chip encoding, inkjet or laser visible personalization and various levels of quality assurance.

HID INTEGRALE™ MODULE:



Personalization

Production solution for personalization and quality assurance, encoding and Public Key Infrastructure (PKI).

Verified applicant data is sent to hardware equipment which personalizes blank identity documents including MRPs and ePassports:

- Personalization solutions including paper, laminate and polycarbonate, as well as chip encoding and access control
- Scale and technology tailored to customer requirements
- ICAO-compliant process

Issuance

Issuance, the final step in the process, can take many forms, from a simple handover to the applicant (possibly including a biometric check), to sorting and enveloping, augmented by the use of RFID- tracking to the point of handover to a carrier.

HID INTEGRALE™ MODULE:



Issue

Centralized and decentralized production of documents with biometric authentication prior to document handover (in person and by post):

- The completion of the application process via a handover of the finished, secure identity document to the original applicant
- Centralized or distributed sites with collection and/or delivery options accommodated

Software and Data

When electronic documents are being issued, there is invariably a Public Key Infrastructure (PKI) requirement which can be fulfilled using standard HID Integrale™ components, with options to provide Country Signer Certificate Authority as a service, or a solution to be housed and operated in-territory.

Software systems can import or export data online or offline, as a one-off operation or as an ongoing aspect of the day-to-day system operation.

HID Integrale is the result of many years of product evolution and incorporates options to implement best practices. In addition to the basic functionality, solutions include electronic inventory control (from the factory and throughout all sites in a distributed system), appointment-making, payment options, self-enrollment and more.

HID INTEGRALE™ MODULES:

Register

Person-centric database, which functions as a central reference point for storage and management of citizen identity data.

Control

Dashboard audit reporting system which monitors, maintains and controls business operations.



Services

HID offers on-the-ground resources to implement the solution locally. Every HID customer benefits from a dedicated project management team to help conceptualize, plan, deliver and manage the ePassport system. Further levels of support – from engineers to project managers and trainers – are also available.

Once in situ, knowledge transfer is absolutely critical to success. HID ensures solutions are internationally interoperable and future-proofed, and that the necessary knowledge is transferred to local people and partners so that they are self-supporting in the long term.



Installation, project management, training and skill transfer, maintenance and service

Delivering Quality

Quality and integrity are central to the manufacturing of all secure documents and software developments. Customers can be assured that their solutions are delivered to meet their exact requirements as well as the highest standards.

Delivering Professional Projects

Specialized, dedicated project management teams ensure that the customer's needs are met, enable clarity throughout the process and foster a collaborative, productive partnership.

Technical Consultancy

HID provides expert consultation to governments looking to better understand and comply with international standards. As well as offering clear insights on the solutions, features and technologies available, specialists create solution roadmaps and give advice on upgrades and futureproofing.

Full Personalization Service

Personalization services can be located at the customer's site, or at secure premises provided and fully managed by HID. The result is a world-class, cost-effective and flexible solution, underpinned by deep knowledge and expertise.

In-Country Installation

With their extensive local knowledge, HID's on-the-ground teams provide support throughout the implementation phase and manage regional third-party contractors and partners.

Knowledge Transfer and Training

As part of the ongoing support package, teams also provide dedicated workshops and in-country training so that customers are fully informed about their identity management solution.

Operational Service Catalog

HID has developed long-term partnerships with governments by providing tailor-made service and maintenance contracts, managed by dedicated support teams. HID also helps manage all new requirements that arise during the life of a contract.

Disaster Recovery and Business Continuity

Being effectively prepared to respond to any potential interruptions to business is essential. Emergency response procedures are always clarified and agreed with the customer upfront.

Benefits of the HID Approach

Cost-effective

Custom solutions provide flexible commercial models that balance upfront investment levels with overall total cost of ownership based on individual needs.

Low-risk solutions

HID holds a unique position as a manufacturer and in-house supplier of most of the key elements of the physical supply chain, from the manufacture of secure, watermarked passport paper to the design, configuration and implementation of proven software issuance solutions and PKI infrastructure. This reduces risk while maximizing overall control and, therefore, security.

Increased security

HID offers a sophisticated layering of multiple unique features along with an innovative issuance process. This guarantees the highest levels of security control and document integrity.

Futureproofing

Experts in complex transition to new technologies and infrastructure, HID can help guide countries through every step of the identity ecosystem roadmap, from MRP issuance through to highly secure, cloud-based identity data solutions.

Browser-based citizen management software

HID Integrale™ is a modular citizen management system that includes flexible, web-based technology and provides an excellent fit with a future-facing customer strategy. Comprised of seven modules, the solution can be completely tailored to individual needs.

Comprehensive package

A fully project-managed approach, including full documentation, training and implementation, is provided.

Proven capability

HID has provided over 20 million ePassports since 2010, and can successfully deliver a solution to fit any needs.

Learn more about how HID moves countries to ePassport: <https://hid.link/otp>





hidglobal.com

North America: +1 512 776 9000

Toll Free: 1 800 237 7769

Europe, Middle East, Africa: +353 91 506 900

Asia Pacific: +852 3160 9800

Latin America: +52 55 9171-1108

For more global phone numbers [click here](#)

© 2023 HID Global Corporation/ASSA ABLOY AB.
All rights reserved.

2023-06-26-cid-epassport-solutions-br-en
PLT-04890

Part of ASSA ABLOY